

J REWRITING OF FIRMWARE

2. ISWTRNS_G

2.1 Specifications

2.1.1 ISWTrns_G (PC software)

(1) Operating environment of the software

- OS: Windows95/98/98SE/Me/NT4.0/2000/XP/Vista Home Basic/Home Premium/Business/Enterprise
- CPU: Pentium 75MHz or above
- Memory: 32MB or above
- Free space in hard disk: 100MB or more
- Others: PC provided with USB interface (TypeA)

The operation environment of the hardware is pursuant to the specification of each OS.

(2) Requirements for checking the check sum

- Personal computer (PC): 1
PC provided with USB interface
- ISWTrns_G program
- Firmware

2.2 Installation of the ISWTrns_G

Install the ISWTrns_G program to the PC.

(1) Procedure

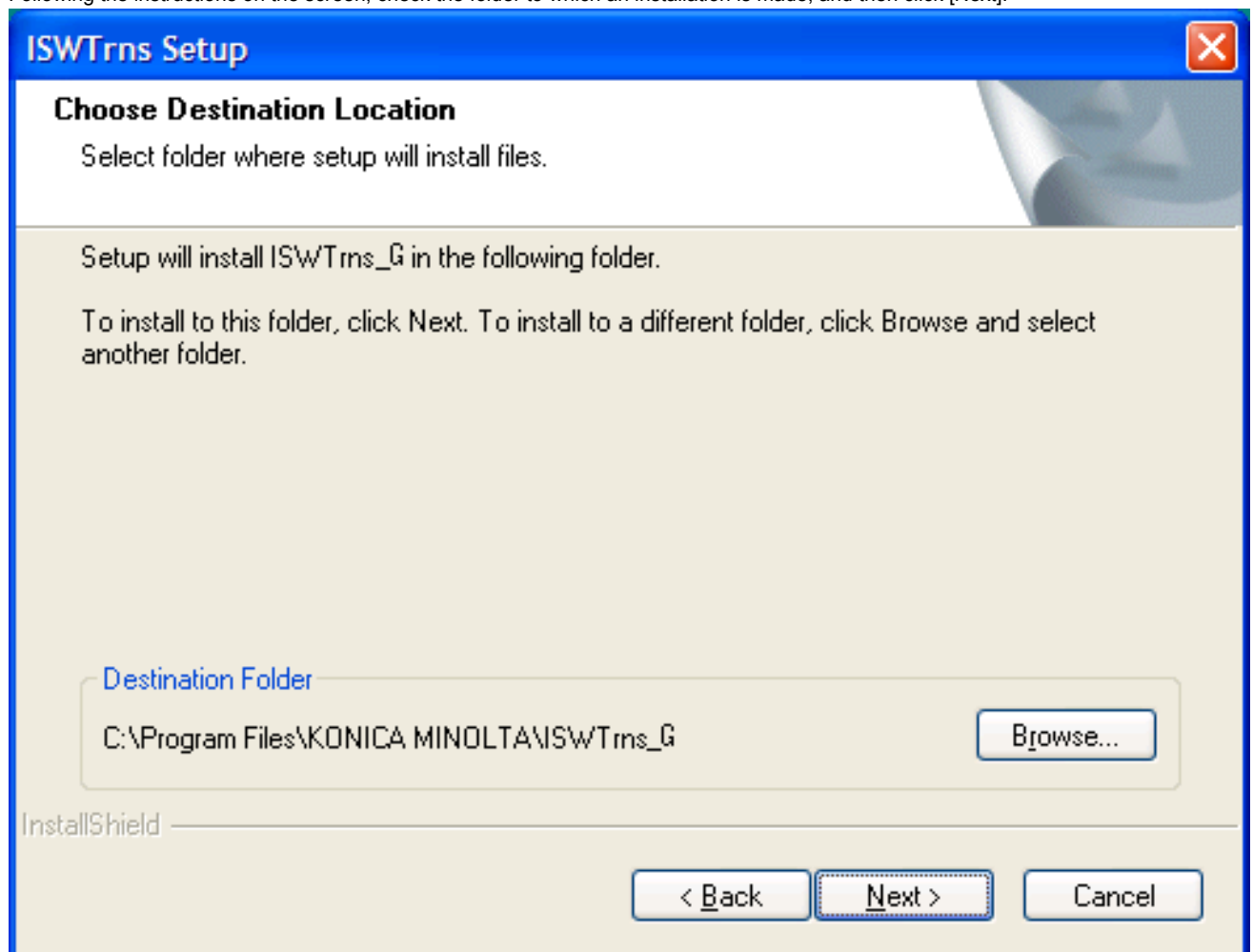
1. Start the PC.
2. Copy the setup files to the PC and double click the [Setup.exe] icon to start the install program.

Note

- When there remains the ISWTrns_G.exe of the old version, uninstall the old version first, and then install the new version.

3. "ISWTrns setup screen"

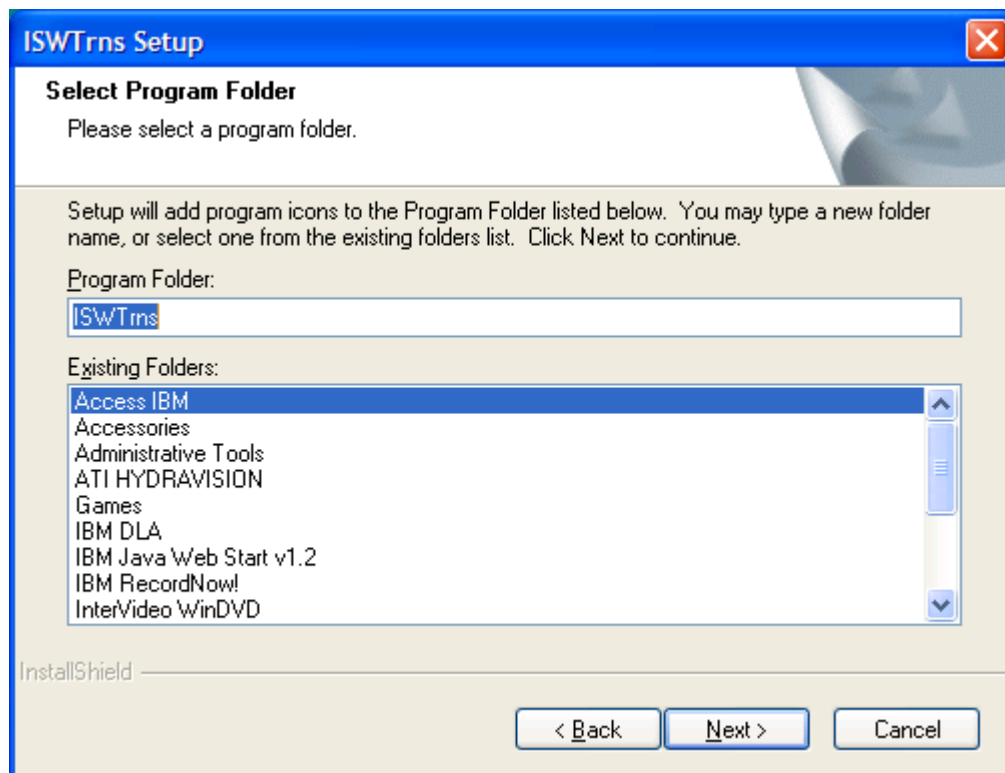
Following the instructions on the screen, check the folder to which an installation is made, and then click [Next].



Note

- "C:\Program Files\KONICA MINOLTA\ISWTrns_G" has been set as a folder to be installed in default.
When changing the folder to which an installation is made, click [Reference] and specify one as you please.

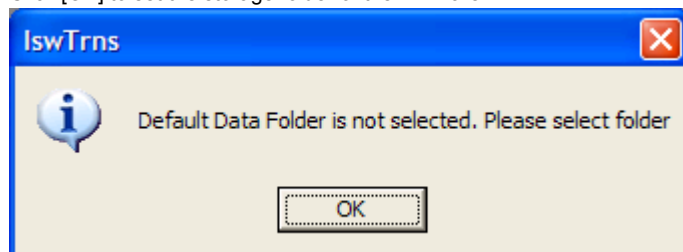
4. Following the instructions on the screen, check the folder to which the ISWTrns program is stored and then click [Next].

**Note**

- For default, "ISWTrns" is set as a folder to which an installation is made.
When changing the folder to which an installation is made, enter a folder name directly, or select one from the existing folder displayed.

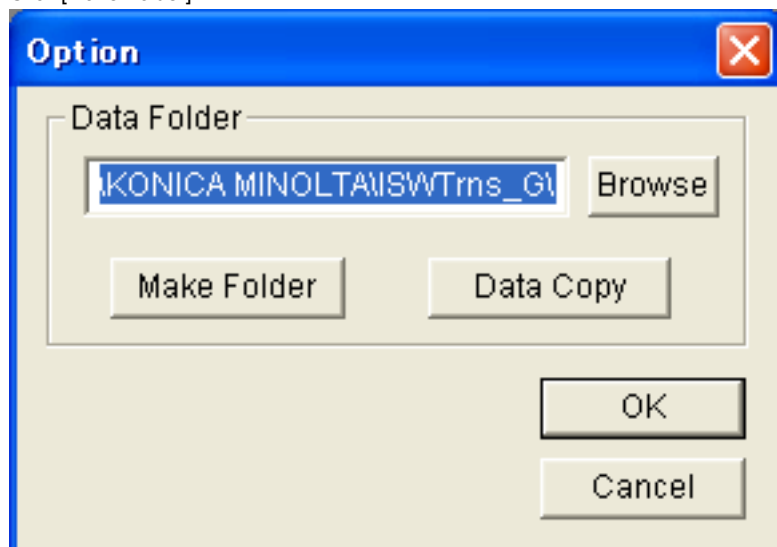
- Following the instructions on the screen, click [Completed].
- The installation of the ISWTrns_G program is automatically completed.
- Select "ISWTrns_G" from the start menu or double click the "ISWTrns_G" icon on the desk top to start up the "ISWTrns program_G."
- "ISWTrns dialog screen"

Click [OK] to set the storage folder of the firmware.

**Note**

- This screen is shown only when the program is started for the first time after installing the ISWTrns_G.

- "Option screen"
- Click [Make Folder].



Note

- A folder (C:\Program Files\KONICA MINOLTA\ISWTrns_G) on which the ISWTrns_G program is installed has been set as a storage folder in default.
- When changing a storage folder, click [Browse] and specify the folder, or make an entry directly in the editor box in full path.
- Clicking [Make Folder] creates hierarchical folders with the storage folder set above as a route.

10. "Option screen"

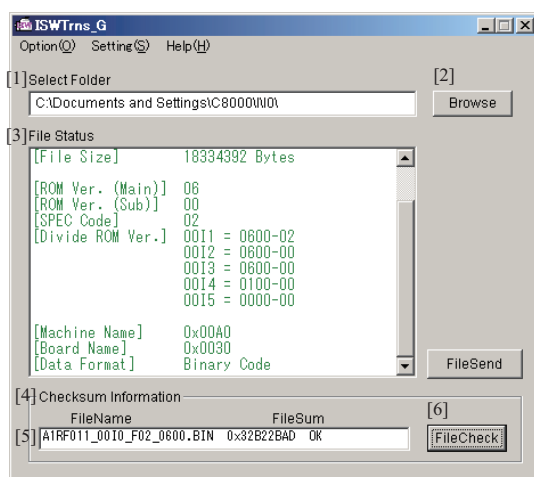
Click [OK].

Note

- This operation stores the data folder created in the step9 into the INI file of the ISWTrns program.

2.3 Usage of the ISWTrns_G**2.3.1 Firmware checksum check****(1) Details on the operation panel display**

When the ISWTrns_G program starts up, the main screen of the ISWTrns_G is displayed. On the main screen, perform selecting of the file (firmware), information display and checksum. For detailed information of the functions, refer to the following.



[1]: Select Folder (File storage folder edit box)

A folder name is displayed in full path from the information of the data folder set and the INI file. When the firmware is in a folder other than the specified data folder, click [Browse] [2] to specify the file location or entering directly the file location.

[2]: [Browse]

This key is used when the firmware is in a folder other than the specified data folder. Display the folder selection screen to select the folder of [1].

[3]: File Status (File detail information)

View detailed information about the version file when select firmware.

[4]: Checksum Information frame

Display the firmware to be used based on the information selected in the frames [1], and click [File Check] [6] to display the checksum of the file and the consistency (OK, NG, ??) of the checksum.

[5]: File information display frame

Display the file version selected.

Click [File Check] at [6] to calculate the checksum of the entire displayed files. Compare the obtained value with the checksum value stored in the checksum file (*.sum) attached to the firmware to display the result.

[6]: [File Check]

With a file used in "Checksum Information" of [4] displayed, press this key to calculate the file checksum (checksum of the entire file) of the displayed file and show a result beside the file. Also, compare the result of the checksum with the checksum file attached to the firmware and display the obtained result in the following form.

"OK": accord

"NG": Not accord

"??": Checksum file (*.sum) not found

2.4 Error list**(1) ISWTrns_G error list**

The ISWTrns_G displays messages when an error is shown or the operation is completed. The following table shows the contents of the message and the status of the ISWTrns_G.

Message	Status of the ISWTrns_G
The opening of the file the checksum of which is to be taken is not available.	The opening of the checksum file failed. The file is in use or damaged.
The opening of the file the checksum of which is to be taken cannot be read.	The reading of the checksum file failed. The memory is insufficient or the OS is in trouble.
The folder name is illegal.	The name of the input folder is illegal. Be sure to enter the whole path from the drive name such as "C:¥."
The default folder has not been set.	The data folder setting has not been set to the ISWTrns.INI.

Set the folder correctly.	Displays at the first startup only.
Some files cannot be copied.	<ol style="list-style-type: none"> 1. The folder to be stored in does not exist. 2. When a file is copied into the folder in which a file of the same name is contained with "O/W (overwrite check box)" not checked. 3. When overwriting is made on an overwrite prohibited file. 4. Another application is using the file. OS trouble.
The transferred file is not found, or a file with an illegal name is found in the folder. Make sure of it.	<p>The number of divisions of the transferred file written in the checksum file does not correspond with the number of files that actually exist.</p> <ol style="list-style-type: none"> 1. When a file with an illegal name is in the data folder, or a file name that seems to be illegal is displayed in the folder list. 2. The number of divided files is insufficient. Check the insufficient number of files in the folder list and copy them again. 3. When the checksum file is damaged, copy it again to the folder.

(2) ISWTrns_G troubleshooting

When an error occurs while in the execution of the ISWTrns_G program, take the measures shown in the following table.

	Condition	Cause	Countermeasures
1	The ISWTrns_G does not start up.	The lswTrns_G.EXE file is damaged	Set it up again.
		The setup file itself is damaged.	Check the setup file and set it up again.
2	When an item in the combo box is selected, the file is not displayed.	The file is not stored in the relevant folder.	Check to see if the relevant file is stored in the folder displayed in the "Select Folder" text box. When a folder into which a file is stored is not found, use the "File copy" function.
		The Data Folder in the Option screen is set incorrectly.	Check the setting of the Data Folder. When a folder into which a file is stored is not found, use the "File copy" function.
		The file name is illegal (or has been changed.)	The file name must be used with no change made. When the file name is changed, the display or selection of the file becomes unavailable. When the file name is changed, return it to former state.
		The folder name is illegal (or has been changed.)	When the folder name created by the [Make Folder] button in the Option screen has been changed, it cannot be found. Return it to former state and check it again.
3	"NG" is displayed in the File Check.	The firmware using is damaged.	Copy the firmware and check it again. When "NG" still recurs, contact the supplier of the firmware.
4	"??" is displayed while in the File Check.	When the firmware was copied to the PC, the copying of the checksum file (*.sum) was forgotten.	Copy the checksum file to the folder same as the firmware at the same time. (When using the data copying function, a copy is made automatically.)